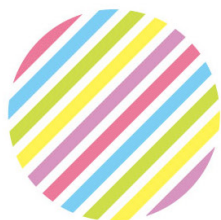


# Seisugen



January 28 - 30, 2022 | Blair County Convention Center | Altoona, Pennsylvania



# I.O.E.A

International Otaku Expo Association

国際オタクイベント協会

International Otaku Expo Association

<http://ioea.info/>

# Welcome to Setsucon 2022

Hello everyone and welcome to Setsucon 2022! My name is McKinley Morris, and I am a 3rd year student at Penn State with a major in Forest Management and a minor in Soil Science. Basically, I major in trees and minor in dirt.

To be honest I did not start watching anime until I was in college. In high school, I was shown some of the WORST shows and thought: "Oh my god all anime is like this." When I got to college my mindset was quickly changed by the current Setsucon secretary Bre, even more so during lockdown. Every night we would talk on Discord and watch anime. Together we watched *Jojo's Bizarre Adventure*, *Miss Kobayashi's Dragon Maid*, & so much more. I know my lockdown experience was very similar to a lot of new Setsucon attendees. To be more involved in the anime community I joined Setsucon during our online convention as a coordinator for PR and then became Con Chair the next year.

I'd like to thank the members on the exec board Emma, Bre, and Shaunelle, who are also members on the exec board for the Penn State Anime Organization and all brought new ideas, helped plan events, and tabled to bring new volunteers, panelists, and participants to the convention. I would also like to thank the directors, Mike, Rahul, Vivian, Lia, and Brandon, you were all fantastic directors and I appreciate you guiding me through an in-person convention. Thank you to all the coordinators who did so much to make this convention happen, and I am happy to see new faces from PSAO. Finally, thank you to everyone for attending and following the guidelines put in place. I am so grateful we get to have a safe convention.

Everyone involved in Setsucon is so happy to be back at Blair County Convention Center where we get to spend the convention with all of you again. Even though this year we aren't a typical convention (sorry cosplayers for having to find a mask to match your cosplay!), being together as a community is worth it. I hope all new attendees and volunteers have a great time and enjoy Setsucon 2022!

*McKinley Morris, Setsucon 2022 Con Chair*



## Table of Contents

|           |                         |
|-----------|-------------------------|
| <b>2</b>  | Beach Party in Paradise |
| <b>4</b>  | Con Vitals              |
| <b>6</b>  | Con Policies            |
| <b>10</b> | Guests of Honor         |
| <b>14</b> | Cosplay Events          |
| <b>16</b> | Musical Events          |
| <b>18</b> | Activities              |
| <b>24</b> | Panels Information      |
| <b>30</b> | Exhibitors              |
| <b>32</b> | Food Guide              |
| <b>34</b> | Staff Listing & Thanks  |
| <b>36</b> | Memories                |



# *Winter's Warmest* **ANIME** *Paradise*

## **BEACH PARTY IN PARADISE**

*Few things are better than spending a weekend in paradise! The beach has something for everyone - warm rays of sunshine, soft grains of sand, soothing waves. In 2022, Setsucon will be taking the things everyone loves about the warmest of times and heating up the coldest of seasons in Altoona, PA.*

By: Michael Tartaglia

From the cool ocean air to the warm sand of the beach, the feeling of being on the shore is unlike any other. Depending on the locale, there may be palm trees as far as the eye can see... or umbrellas too, with blankets, coolers, and games scattered about.

But the party in paradise is not exclusive to just your vacations - anime has its share of beach party adventures. The

required "Beach Episode" (or "Swimsuit Episode" in Japan) is somewhat of an anime tradition. It is an episode where the show gets to take a break and hit the relaxing shores of whatever beach they happened to find (no matter what planet they may be on).

The origins of the Beach Episode aren't really clear - some say it started with Mobile Suit Gundam (go figure), others with the 80s show Urusei Yatsura. While





## OUR FAVORITE BEACH ACTIVITIES

Making Sand Castles

Going for a Swim

Playing Volleyball

Biking

Picnicking

Meeting Up with  
Friends

Exploring

Spikeball

Surfing

Walking the Dog

The Boardwalk

Finding Seashells

the origins are a bit foggy, the impact is far from it. Gurren Lagann and High School of the Dead have two of the most iconic Beach Episodes, taking a break from the heaviness of the shows... but still finding its way to an action sequence or two. Even the dark horror Another finds its way to the beach, making a cheerful scene turn into a horror-mystery minefield.

For longer trips to paradise, Assassination Classroom takes its students on an island vacation for a whole arc, filled with its fair share of humor, bikinis, and gun-fights. Or more recently in Science Fell in Love, So I Tried to Prove It, the whole climax of the first season takes place with the ocean waves as its backdrop. And somehow Attack On Titan and Darling in the Franxx

find their way to the beach (don't ask where they found those beaches).

While the beach episode may take a break from an otherwise plot heavy show, it represents a common seasonal activity for those in Japan, similar to school festivals. Beach Episodes are a great way for shows to reveal a lot more about the characters - allowing them to open up, share more, and tell a different side of their story than a normal episode allows.

From action-packed shonen to slice-of-life and rom-coms, the Beach Episode has become an essential story-telling tool in more ways than one.



## Helpful Information

### Information Desk

The Info Desk can be found outside of Panels. Stop by anytime during the convention if you need assistance. Our staff are happy to answer any questions that you may have. You can also sign-up for the Hall Cosplay and Masquerade here.

### Prop Check

All props, no matter the size, must be checked in at Prop Check, located at our Info Desk. If you carry a prop that has not been checked in, you will be asked by our staff to head to Prop Check immediately. Please review our Prop Policy in our booklet or website for more information on what props are allowed.

### Lost & Found

If you lose any belongings during the con, stop by the Operations Room for our Lost & Found to see if it has been turned in.

### 18+ Events

Attendees who wish to attend an 18+ event must have their photo ID ready to be presented at the door to the event. There is absolutely no admittance into an 18+ event without a proper ID.

### Setsucon Merch

Get yourself official Setsucon Gear at the Merch Booth in the Exhibitors Hall! Buy the exclusive 2022 convention t-shirt for just \$20, or take home a cool drawstring bag.

### Silent Auction

Visit the Exhibitors Hall for our Silent Auction benefitting Extra Life. Check out some sweet items up for auction, graciously provided by industry partners and exhibitors. Bid on the items throughout the weekend for your chance to get some of these sweet items!

## Hours of Operation

### Convention Hours

Friday: 6:00pm - 11:30pm  
Saturday: 8:00am - 12:00am  
Sunday: 8:00am - 6:00pm

### Information Desk

Friday: 5:30pm - 11:30pm  
Saturday: 7:45am - 12:00am  
Sunday: 8:00am - 4:00pm

### Registration Desk

Friday: 5:30pm - 9:30pm  
Saturday: 7:45am - 6:00pm  
Sunday: 8:00am - 2:00pm

### Convention Ops

Friday: 4:00pm - 11:30pm  
Saturday: 7:30am - 12:00am  
Sunday: 7:30am - 6:00pm

### Exhibitors Hall

Saturday: 10:00am - 6:00pm  
Sunday: 10:00am - 3:00pm

### Manga Library

Friday: 6:00pm - 11:00pm  
Saturday: 9:00am - 11:00pm  
Sunday: 9:00am - 5:30pm

### Tabletop Gaming

Friday: 6:00pm - 11:00pm  
Saturday: 9:00am - 11:00pm  
Sunday: 9:00am - 5:30pm

### Video Gaming

Saturday: 9:00am - 11:00pm  
Sunday: 9:00am - 5:00pm

### Itasha Car Show

Saturday: 10:00am - 6:00pm  
Sunday: 10:00am - 3:00pm

### Photo Suite

Saturday: 12:00pm - 2:00pm  
4:00pm - 6:00pm  
Sunday: 1:00pm - 4:00pm

### Autograph Sessions

Saturday: 3:30pm - 4:30pm  
Sunday: 1:00pm - 2:00pm

### Food Court

Saturday: 11:00am - 6:00pm  
Sunday: 11:00am - 3:00pm

## Event Sign-Ups

### Card Gaming Tournaments

Sign-ups, times, and rules are available in the Tabletop Gaming Room. This year, we will be running the following tournament:

- Magic The Gathering: Commander

### Charity Gaming Tournaments

Sign-ups for the charity video game tournaments will be happening Friday night outside of Registration. \$15 fee for each game - all proceeds to charity (NAMI).

### Game Gauntlet

To qualify: win one of our Saturday Video Gaming Tournaments for an auto-bid or get one of the wildcard spots (see Video Game Room for more information). Some lucky attendees may even get picked from the crowd during the event.

### Hall Cosplay Contest

Sign-ups for the Hall Cosplay Contest will be happening Saturday morning at the Information Desk. Stop by and sign-up for a time to present your cosplay to our judges.

### Iron Cosplay

Sign-ups for the Iron Cosplay will take place at the beginning of the event, with audience members picked at random to participate. Get your seat at the start of the event for a chance to be a contestant.

### Masquerade

Sign-ups for the Masquerade will be happening on Saturday at the Information Desk. Stop by and sign-up as an individual or a group. You must attend the Masquerade Practice Session on Saturday afternoon to be able to take part in the Masquerade.

### Video Gaming Tournaments

Sign-ups, times, and rules are available in the Video Gaming Room. This year, we will be running the following tournaments:

- Super Smash Bros. Ultimate Doubles
- Super Smash Bros. Melee
- Soul Calibur 6
- Guilty Gear Xrd Rev 2
- Mario Kart 8
- Pokemon Brilliant Diamond/Shining Pearl



# Con Policies

*While Setsucon may be a winter convention, our staff try to make the venue as warm and inviting as possible. The following policies are in place to help ensure that all congoers have fun at Setsucon. If you have any questions, let us know and we'll be happy to help clarify them.*

*Possible sanctions for not following the set forth policies include, but are not limited to: verbal warning, removal from event, removal from the convention center, revocation of convention badge, and if necessary, police intervention. Please do not make us go any further than a quick verbal warning.*

*Badges must be in plain sight at all times. ANYTHING illegal outside the venue is illegal inside the venue. All Federal, State, and Local laws apply and supersede any policies we have in place. Setsucon is not liable for any injuries, should they occur.*

## Covid-19 Facemask Policy

Masks/Face Coverings are required for all attendees, exhibitors, guests, and staff in all public and event spaces of the convention center. Masks may be removed only in limited circumstances, such as for cosplay photos, eating/drinking (while seated), presenting a panel as a panelist, and other circumstances allowed by Setsucon Staff. As this is a Family-Friendly convention, masks must be family friendly as well.

## Refund Policy

Registrations are nonrefundable and nontransferable. If you have any questions, please stop by the Registration Desk.

## Disruptive Behavior

Setsucon is a family friendly convention (PG-13). We ask that our attendees act accordingly. The following actions are considered disruptive behaviors:

- Blocking hallways, doors, and exits.
- Running down the hallways.
- Excessive noise and yelling.
- Excessive public displays of affection.
- Glomping, hugging/touching, or harassment of anyone without their consent.
- Selling of anything, with the exception of artists and vendors in their respective areas.
- Fighting, both real and mock.

Setsucon reserves the right to ask an attendee to change clothes if they are inappropriately dressed.

Animals are prohibited unless they are necessary for medical reasons.

Use common sense. If you are invading someone's space or violating their rights, there is a good chance you shouldn't be doing it. The above list is not all inclusive; if a Setsucon or venue staffer asks a reasonable request of you, please follow their request.

## Line Etiquette

Please be aware that there is a really good chance that you will be waiting in a line of epic proportions at some point in time. Please be respectful of the people around you. Anyone cutting in line will be sent to the back of the line. Also, please do not block doorways when waiting in line. Any line for an event may not be formed until 15 minutes prior to the event. The line will begin at the discretion of Setsucon staff and "lines for the line" will not be permitted. Setsucon staff reserves the right to disband any lines formed before this time period.

## Theft Policy

A friendly reminder: Setsucon and the venue are not responsible for lost or stolen items. If you do lose an item or suspect it has been stolen, please report to the Convention Operations room. If your item is in the Convention Operations room, be prepared to describe it in detail in order to get it back.

- If an attendee is caught stealing, they will immediately be turned over to the proper authorities.
- If you find an item that doesn't belong to you, please turn it in to Convention Operations.

## Camera Policy

Feel free to take as many pictures as you would like in the convention area! However, please do not block the hallways or doors, or hold up traffic to take pictures. Try to step off to the side and out of the way of traffic. Cameras will not be allowed in any event where they will cause a distraction. This includes, but is not limited to panels and viewings. Proper procedure for taking a picture of a cosplayer/attendee is to ask for permission first and then find a suitable spot to take the picture. If the person declines the request, please respect their decision.

Photography is NOT permitted in the Artist Alley.



## Weapons Policy

Weapons are NOT permitted inside the venue. To reiterate: if it is illegal outside the venue, it's still illegal inside.

- NO LIVE STEEL. Metal or metal containing weapons of any sort are not allowed on the premises.
- NO GUNS. Period. Of any kind. This even includes airsoft guns with orange tips.
- No explosives or chemicals.

The venue does not allow weapons and Setsucon does not allow weapons. It's as simple as that. Any person found with a weapon will be asked to remove it from the convention area and may be escorted out. Failure to do so will result in confiscation of the weapon and your badge.

## Setsu Odori (Dance) Policy

Dance your heart out! To help ensure everyone has a good time, please be aware of the following rules:

- Be mindful of people around you while dancing.
- A badge must be displayed at all times.
- Props are not allowed into the Odori.
- No swinging or throwing objects (glow sticks, glowing swords, etc.).
- No excessive public displays of affection.
- No fighting.
- No bottles or containers of any kind are allowed into the Odori.
- No food of any kind is allowed into the Odori.
- If you are under the influence, you will be asked to leave.
- No bags are permitted within the Odori.
- Setsucon staff will not hold, watch, or in any way assume responsibility for any items left near the Odori.
- Masks/Face Coverings must be worn at all times.

## Sign Policy

Signs that are an integral part of a cosplay are acceptable. Any other sign is not allowed. This includes signs written on any medium such as: paper, cardboard, handwritten onto T-shirts, etc. Signs that could be considered solicitation are not allowed. For example, a sign reading "FREE HUGS" is not allowed. Signs with anything inappropriate on them will be confiscated.

## Guest and Autograph Policy

Setsucon cannot guarantee that you will be able to get an autograph from the guests. There is a time limit on autograph sessions that we will

be strictly adhering to. We want to ensure that as many people as possible are able to interact with the guests, so please keep the lines moving. We recommend writing down anything that you wish to say to the guests in case you forget.

Guests will be happy to autograph your Setsucon Programming Booklet, as well as any officially licensed merchandise. Guests reserve the right to refuse to sign anything that may be counterfeit. Signing of personal items is at the discretion of the guest. There is a limit of 2 autographs per person and there will be no flash photography at the autograph sessions unless otherwise noted. Guests may accept small gifts that they can store in their luggage. We ask that all gifts are not wrapped because we will need to check them before giving them to the guest. Guests will not accept any food. Please do not visit the guest's private quarters.

Setsucon reserves the right to make changes to the Guest and Autograph Policies as the circumstances or guests dictate.

## Minors at Setsucon

Setsucon welcomes attendees of all ages. A parent or guardian must accompany a child under the age of 18 at all times. Setsucon is not a child sitting service. We recommend that all children carry some form of identification along with contact information of their parent or guardian. In the case that a child becomes lost, this makes it less stressful for everyone. The venue does not have a PA system.

## 18+ Policies

Setsucon has a few 18+ events late at night. Attendees who wish to attend one of these must have their ID ready to be presented at the door to the event. Rooms will be cleared out prior to the event. There is absolutely no admittance into an 18+ event without a proper ID.

## Photographs and Promotions

Attendees of Setsucon are granting permission to be photographed or recorded by authorized Setsucon staffers. By purchasing your registration, you inherently grant Setsucon the permission to use such photos or recordings for promotional or chronicling purposes.

## Policy Updates

The policies are subject to periodic review by Setsucon's Executive Board and may change without prior notice. A copy of the current policies in effect for the convention will be posted at the registration and information desks.

# Cosplay & Prop Policies

## Cosplay Policy

To ensure that Setsucon remains a safe and family-friendly convention, there are a number of cosplay guidelines for you to follow when preparing a cosplay for the convention:

- This is a family-friendly convention, so it is important to wear appropriate attire. If it would not be acceptable at a pool, it will not be acceptable at the convention. If there is a cosplay that you have in mind that would cover you insufficiently, consider the use of leggings or a leotard.
- Shoes must be worn at all times.
- Full cosplay masks are acceptable, but must be easily removable, and we ask that it be removed after leaving the convention area. This is not a replacement for a Covid-19 mask/face covering.
- Keep in mind the size of your cosplay and props when planning for the convention. Consider ways in which your cosplay could inhibit your movement or the movement of those around you. As an example, a pair of wings that protrude from your back may easily hit people nearby when you turn. If you cannot avoid this, it is a good idea to have a friend with you to help you navigate safely.

Setsucon reserves the right to deem any cosplay unsuitable for the convention space, in which case you will be asked to change into a more appropriate attire. Your badge will be held at registration and will be returned upon approval of alterations.

## Prop Policy

All props must be checked in at Prop Check and approved. Any prop that resembles a gun must have a painted orange tip and must have no moving or internal parts. Misuse of props that endanger other attendees will not be tolerated. Full cosplay masks must be easily removable and we ask that it be removed after leaving the convention area.

Props are acceptable as long as they:

- Are made of wood, plastic, foam, or similar material
- Are less than 7ft in any direction and less than 50 lbs
- Have been checked in and have received the approval marking
- Have no sharp edges
- Do not have chains longer than 18 inches
- Do not contain metal

Setsucon reserves the right to deem any prop unsuitable for the convention space.



# Harassment Policy

Setsucon has a zero-tolerance policy regarding harassment of any kind. Harassment is defined by the victim. Harassment can include but is not limited to:

- Any action that can intimidate, insult, offend, or ridicule another person for any reason including but not limited to race, color, gender, gender identity or expression, age, religion, national origin, sexual orientation, disability, veteran's status, appearance or body size, and/or relationship status.
- Any behavior that threatens, humiliates, manipulates, degrades, or undermines another person.
- Unwelcome physical or verbal attention.
- Non-consensual sexual advances, flirtation, photography, or recording.
- Requests for sexual favors.
- Any action often referred to as "bullying".
- Any action that may be physically, emotionally, or mentally harmful to another person.

Remember, cosplay is not consent. Please be kind, polite, and courteous to other people. If someone asks you to leave a conversation or stop doing something that makes them uncomfortable, please abide by their request.

If you or anyone you know experiences or witnesses any verbal or physical action that may be considered harassment or bullying, please notify a staff member immediately. Setsucon will take any action necessary to prevent or stop the harassment or bullying from occurring including but not limited to, in no particular order:

- A single verbal warning.
- Revocation of badge without refund
- Immediate removal from the convention premises.
- Placement of offender on blacklist for all future Setsucon events.
- Notification of law enforcement authorities where appropriate.

# Covid-19 Policy

Following CDC Recommendations for large indoor gatherings, and in the best interest of the safety of all attendees, exhibitors, guests, staff, and other participants of Setsucon 2022, we shall be implementing policies to ensure the safety of the convention.

We will be requiring the following for all participants:

- Masks/Face Coverings Required in All Public and Event Spaces of the Convention Center
- Proof of Vaccination (Final Dose Dated No Later Than January 14th, 2022) or Negative COVID-19 Test (Dated No Earlier Than January 25th, 2022)

Proof of Vaccination can be provided either as the physical vaccine card, photos of both the front and back of the physical vaccine card, or through a validated COVID-19 vaccination confirmation app. The name on the ID presented for badge pickup must match your vaccination or COVID-19 negative test information.

Masks and Proof of Vaccination will be required for all attendees, exhibitors, guests, and staff. Masks should be worn in all public and event spaces of the convention center. Masks may be removed in limited circumstances, such as for cosplay photos, eating/drinking, presenting a panel as a panelist, and other circumstances allowed by Setsucon Staff.

*Note: Those currently not eligible for the vaccine (such as those 12 years of age or under, as of now) will not be required to present proof of vaccination or a negative COVID-19 test. Those 2 years of age or under will not be required to wear a mask, per CDC recommendations.*

Any violations to our COVID-19 policies may result in sanctions, including but not limited to: verbal warning, removal from event, removal from the convention center, revocation of convention badge, and if necessary police intervention.

# Quests of Honor



**Brittany Lauda**  
Voice Over Guest

Brittany Lauda is a voice actress & ADR director best known for playing F.F. in *Jojo's Bizarre Adventure*, Yuzuriha in *Dr. Stone*, Riko in *Made in Abyss*, Satoko Hojo in *Higurashi GOU/SOTSU*, Ichigo in *Darling in the Franxx*, Mai in *Nichijou*, Cow Girl in *Goblin Slayer*, Lessar in *A Certain Magical Index*, Kenya in *That time I Got Reincarnated as a Slime*, Doctor in *Akudama Drive*, Young Law in *One Piece*, Sui and Sota in *Darwin's Game*, and Mirim in *Queen's Blade* (to name a few!).

You can also catch her voice in *Pokemon XY*, *Rainbow High*, *My Hero Academia*, *Tokyo Ghoul:re*, *Super HxEros*, *Kemono Jihen*, the defunct *Interspecies Reviewers*, Hasbro apps & games like *My Little Pony* and *Transformers*, and various video games like *MapleStory*, *Disgaea 6*, *YS IX: Monstrum Nox*, *Shadowverse*, *Granblue Fantasy*, *Gundam Battle Operation 2*, *Battlerite*, *Huniepop*, *Smite*, *Yokai Kitchen*, *Heroes Arena*, and *Minotaur*. As an ADR Director, some of her favorite series she has directed (lead/assistant) include: *Akudama Drive*, *Kemono Jihen*, *That Time I Got Reincarnated as a Slime*, and *Morose Mononokean*. She also co-owns Kocha Sound with her husband Matt Shipman.



**Matt Shipman**  
Voice Over Guest

Matt Shipman is a Voice Actor, ADR Writer, ADR Engineer, and all around nerd-guy. He is best known for voicing Chrome in *Dr. Stone*, Inasa Yoarashi/Sen Kaibara/Mr. Brave/Takeshita in *My Hero Academia*, Floch in *Attack On Titan*, Reki Kyan in *SK8 The Infinity*, and Hiro in *Darling in the Franxx*.

Additionally, he can be heard in *Yu-Gi-Oh! Arc-V* as Shay, Arifureta: *From Commonplace to World's Strongest* as Hajime, *One Piece* as Cavendish, *Akudama Drive* as Cutthroat, *GOSICK* as Kazuya Kujo, *Saint Seiya* as Hagan, *A Certain Scientific Railgun T* as Gunha, *Legend of the Galactic Heroes: Die Neue These* as Julian Mintz, *Goblin Slayer* as Greenhorn Warrior, *Touken Ranbu: Hanamaru* as HigeKiri, *Black Clover* as Alecdora, and many other anime.

Matt also writes scripts for Funimation (*New Game!!*), Media Blaster (*Juden-Chan*), and Discotek, and occasionally assistant directs (*Akudama Drive*). He also co-owns Kocha Sound alongside Brittany Lauda. Matt plays *Street Fighter*, loves *Zero Escape* and *Persona* series, watches seasonal anime, plays card games, and loves to talk about all things nerdy.





### **Antipode** Performance Guest

Antipode is an eccentric dance group that has combined their love of otaku/nerd culture with their love of belly dancing to create a unique form of dance known as geek belly dancing. Antipode performs throughout the year at numerous conventions. They were founded in 2005 and have performed all over the United States, Canada, and the United Kingdom.

The group is currently made up of three dancers: co-directors Ayla, the choreographer; and Merika, the costumer; and member Kaiya, our quirky propmaster. Though primarily the three, Antipode has had multiple guest dancers grace their shows.

Fusing the theatrics of acting with a mix of cosplay, pop-culture, and off-beat humor Antipode brings the audience not just dance, but full geek entertainment.



### **Charles Dunbar** Gaming Guest

Charles Dunbar is a fan of many things, which anime and Japanese culture are but one (admittedly large) sphere. After discovering the medium through *Dragonball Z* in high school, he spent his formative college years indulging in giant robots, *Pokemon*, JRPGs, and *Rurouni Kenshin*, never expecting his coursework in cultural anthropology to ever intersect with his burgeoning fandom identity. This was only the first of many instances when the Universe decided to troll him for his obliviousness.

He's been a guest lecturer at Katsucon, Ohayocon, Colossalcon, Youmacon, Anime Boston, Otakon, AnimeNEXT, Anime North, and many other shows, often coming back year after year to both indulge his love of anime conventions and educate his fellow fans on all manner of mythology, Japanese sacred culture, fan culture, and whatever else grabs his interests.



### **Awesomus Prime** Concert Guest

Part of Kawaii Kunai Awesomus Prime is the Rock Star convention Producer/DJ who doesn't shy away from entertaining the nerdy masses. His music is dedicated to showcasing remixes and music inspired by your favorite video games, anime, and cartoons. He also spices things up with just a dash of chiptune for his geek infused tracks and performance. Don't let your guard down around him though, you may catch a combo breaker of bass heavy music to the face. Awesomus has been DJing the con circuit across the country quickly becoming a fan favorite and it's easy to see why. He brings a highly energetic spirit to every set as he runs around dancing with fans, breaking it down and has been known to headbang the night away. He is also the CEO of the Anime and Gaming record label, Kawaii Kunai Music, which is dedicated to bringing you Nerdy Weeb Music for Nerdy Weebz. This Mech Warrior DJ is one artist you don't want to miss!

# Guests of Honor



**GR3YSON**  
Concert Guest

Part of Kawaii Kunai  
A unique artist to say the least, Brooklyn native now Bethlehem, PA resident GR3YSON is blazing a trail in his own niche. Incorporating his passion for video games and anime he has developed a brand of music that goes over very well with a thus far untapped market. Uniting tech wiz's with the culture of Hip Hop he has etched his name into the conversation of the Quaker State's top acts.

Performing for the past 5 years, GR3YSON has shared the stage with notable MC's and peers the likes of Devin hailey, Mickey Factz, Shiki tohno, Richie Branson & Mega Ran to name a few. His favorite artist of note is the super talented Royce Da 5'9" and that influence certainly reveals itself in GR3YSON's penchant for pushing the envelope lyrically and composing outside of the box.



**Heroes 4 Hire**  
Concert Guest

Part of Kawaii Kunai  
Heroes 4 Hire is an American hip hop music duo from Philadelphia, Pennsylvania. The group consists of Tray-Digga The Legendary Super Saiyan and Ray Riley Tha Shinigami respectively and are often backed-up by The Mech Warrior DJ, Awesome Prime. The Duo, Specializing in Nerdcore hip hop, are a hidden gem of the East Coast. Often a surprise to most crowds on first encounter, but an instant fan favorite of the tri-state music scene.

They are best known for their animated and hardcore delivery in live performances, carefully crafted lyrics and nerdy references that will sucker punch you right out of the track! The Heroes have rocked the stage at many cons along the East Coast and Midwest. Heroes 4 Hire is one of the most enlightening additions to this era of music anyone has ever seen.



**Otaku Ongaku**  
Concert Guest

Part of Kawaii Kunai  
Otaku Ongaku translates to Nerd Music! With over 1,000,000 streams on Spotify and climbing, anime cover band Otaku Ongaku has performed at conventions of all types and sizes! Playing LIVE fan favorite OSTs, you can pre-listen to their studio and internet covers and connect with them on social @otaku\_ongaku.



**ThaGataNegrra**  
Concert Guest

Part of Kawaii Kunai, ThaGataNegrra is an alternative hip-hop artist who specializes in a funky start-stop delivery; her rhyme arsenal runs the gamut from danceable ear candy to mind-searing aggression. Her distinct flow, catgirl persona, and kawaii aesthetic not only earned GATA the designation of "NJ's real-life Catwoman", but helped her make her own pawprint on the underground hip-hop scene and the con circuit. Armed with influences ranging from Golden Era hip-hop and punk to dance and new wave, she pounced through a few groups before landing on her feet and striking out on her own.

GATA is a proud geek and otaku, and her performances highlight this by featuring cosplay and her own take on decora kei-meets-Afrofuturism style. Her in your face kawaii hop sound was included in the second and third seasons of the groundbreaking hit Hulu show "East Los High".



**DJ Kyon**  
Setsu Odori Guest

Growing up in New York City, DJ Kyon became a fan of all genres of music! His love for sound extends to Latin culture, Hip Hop, R&B, and EDM (ie. G-House, Jungle Terror, Tribal). Kyon, also known for his cosplay couture, was first introduced to the profession by a DJ who would soon become his mentor. Kyon has accomplished more than your average DJ in the past two years under this guidance. He has performed in major night clubs in NYC such as Attic Rooftop, The DL, and Slate NY. DJ Kyon is now curating his own party experience with his co-company, Otakus With Attitude.

Although Kyon has taken up the art of djing, he has also made an impact in the cosplay party scene too. Establishing himself amongst household events such as SonicBoomBox, & Sexy Nerds to perform at cons throughout the US, such as Otakon, Awesome Con, NYCC, & Anime Expo. You name it, he's played it!



**n00neimp0rtant**  
Setsu Odori Guest

n00neimp0rtant (aka Rocco Jackal) is a drum & bass music DJ and producer hailing from Pittsburgh, PA, where he launched his DJing career at Anthrocon in 2016. Since then, he's performed in 10 different cities across the United States at conventions from coast to coast. His signature blend of heavy basslines and heart-pounding beats with feel-good, funky, and soulful vibes arrive to the dancefloor in PA once again!



# Cosplay Events

## Masquerade Showcase

Setsucon's premier cosplay event is back once again! Come be entertained with the some of the top skits and talents, all on our Main Stage. Looking to show off your best in this mix of cosplay, fashion, singing, dancing, and entertainment - sign-up at the Information Desk on Saturday morning - all are welcome to participate (solo/group performances).



## Iron Cosplay

The ultimate make-your-own cosplay challenge! Contestants will have 45 minutes to complete a cosplay with only the provided ingredients. Four contestants may enter - but only one will emerge the champion!



## Hall Cosplay Contest

Have you made a stunning cosplay you want to share? Enter the Hall Cosplay Contest and share your cosplay with our judges & compete for prizes. Enter Saturday Morning at the Info Desk.

## Cosplay Photoshoots

Find fellow cosplayers from the same show and share in your love of cosplaying the fandom - photo meetups all weekend in our photo suite. See schedule for more info.





# Emcee & Cosplay Judges



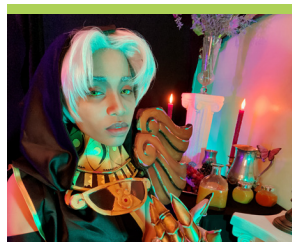
**Silver Sheep**  
Emcee

Twitter/IG: @silversh33p  
Mara "Silver Sheep" is a cosplayer, streamer, & grad student. Setsucon was her first anime con and she has continued to attend since 2014, starting as emcee in 2017. She loves returning to her hometown con. When not cosplaying, you can find her streaming & studying LGBTQ+ focused Psychology.



**Corwynte**  
Cosplay Judge

IG/Twitter: @corwynte  
Corwynte is an award-winning cosplayer who specializes in sewing and attention to replicating cosplay details. With a repertoire of techniques and experiences with an array of fabrics, dyes, foams, and more, they are thrilled to be back at Setsucon this year as a judge after first attending in 2019.



**Minomotu**  
Cosplay Judge

Twitter: @minomotu  
Mino is a cosplayer, photographer, and artist who has been cosplaying since 2009, with Setsucon being one of their first conventions ever.



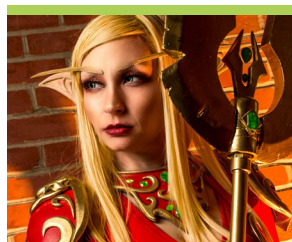
**Risuruu**  
Cosplay Judge

Twitch/IG: @risuruu  
Risuruu is a long-time cosplayer, gamer, and PSU alumnus from Erie, PA. Despite being from out of town, she considers Setsucon her "home" con and looks forward to it every year. Having cosplayed for over a decade, she has had the privilege of cosplaying for companies such as VIZ a & Sentai. You can also find Risuruu on Twitch too!



**Riyuski**  
Cosplay Judge

Twitter: @riyuski  
Riyuski (or Crystal) is excited to be returning to Setsucon for another year! She has been cosplaying and going to cons since 2007 and still enjoys it greatly. She finds cosplaying as a great creative outlet and has introduced her to many amazing long term friends.



**Zadra**  
Cosplay Judge

IG/TikTok: @zadrabug  
Zadra - a NYC to Elk County, PA transplant - has been cosplaying for nearly 12 years and specializes in armor and props. Over the years, she has won several craftsmanship awards, as well as judged cosplay contests at many cons. In her spare time, she likes to spend time playing with ferrets, working out at the gym, and hoop dancing!

# Musical Events



## Friday Night Concert

9:30pm | Friday | Main Events

Featuring

*Awesomus Prime & ThaGataNegrra*  
The Setsucon 2022 Kickoff Party! With nerdy music, hip-hop, & more - get ready to get loud and pumped up!

## Saturday Concert

12:30pm | Saturday | Main Events

Featuring

*Otaku Ongaku*

From fan favorite OSTs to the best anime songs to sing along to, anime music is abound throughout this show!

## Otaku Ongaku オタク音楽





## Setsu Odori

9:00pm | Saturday | Main Events

*Featuring*

*n00neimp0rtant & DJ Kyon*

The Late Night Dance Returns!  
The lights go down and the  
beat turns up in this epic end  
to a Saturday Night!



## Dance Policies

Be Mindful of Everyone  
Badge Displayed At All Times  
No Swinging of Objects  
No Throwing of Objects  
No Excessive PDA

No Bottles/Containers  
No Food or Drinks  
No Bags/Props Permitted  
No Fighting  
Facemasks Worn At All Times



## Sunday Concert

2:45pm | Sunday | Main Events

*Featuring*

*Heroes 4 Hire & Gr3ys0n*

End the weekend with a bang  
as our Sunday Concert wraps  
up our weekend and finishes  
the con with a bang.

HIP-HOP CHIPTUNE EDM  
RAP INDIE INSTRUMENTAL  
ELECTRO TRANCE

METAL POP DUBSTEP PLIN  
JAGGAE DISCO INDIE  
K-POP ROCK WAVE

# Tabletop Gaming



## Casual Tabletop Gaming

Head over to the Tabletop Gaming Room during the weekend for some fun tabletop games - from casuals to expert level games. We have all of your favorites! Presented by Jake's Cards & Games.

## Card Gaming Tournament

Put your decks to the test in the ultimate throwdown. Get ready to duel! Sign-ups and rules available in the Tabletop Gaming Room. This year, we will be hosting the following tabletop tournament:

- Magic The Gathering: Commander

## Tabletop Learn-To-Plays

Have you ever wanted to learn how to play some really interesting and fun group tabletop games? Join our team throughout the weekend in the Tabletop Gaming Room for Learn-To-Play activities, including:

- Book It! The Pro Wrestling Promoter Game
- Marvel Villainous: Infinite Power

## Setsu Roll Live Show

From Twitch to the Stage, our Setsu Roll team takes their semi-weekly tabletop rpg show to Setsucon, just for you! Join our crew in a one-shot adventure.



## Charles Dunbar Tabletop RPGs Lies and Shadows

T4 homebrew adventure for those interested in Japanese mythology. The sun has vanished. The world plunged into darkness. As leaders frantically seek answers, a lone cleric hires heroes to investigate a strange cave leading deep inside the earth. Bring your own Level 20 (!) character, or choose from a pregenerated one. Adventurer's League/ Organized Play characters welcome.

## Two to Tengu

A strange messenger has delivered a stranger message! A fey being asking for help in training his heir. And only humanity can help with that specific challenge. Bring your wits (and a T2 character) and be rewarded with his task. A Setsucon special WBW-DC organized play adventure.

## Unannounced RPG

To end the con... player's choice of adventure.





# Video Gaming

## Casual Video Gaming

Stop by the Video Gaming Room during the convention to play some of your favorite games, from new games to classics, rhythm, parties games, and much more. Just step right up to any open console and get to playing - no need to ask first. If you are looking for a specific game, stop by the gaming desk in the Video Game Room to inquire about if we have a copy.

## Game Gauntlet

Do you consider yourself great at video games? Test your mettle in the 4th Annual Setsucon Game Gauntlet! This bracket-style tournament features a variety of different games, tricks, traps, & more.

Entrants for the Game Gauntlet are chosen from the Saturday Video Game Tournament winners, Saturday Qualifier Challenge winners, and filled from the audience. Visit the Video Game Room to learn more.

Don't want to compete but want to watch? Make sure to stop by the Video Game Room on Sunday to see who comes out on top!

## Video Game Tournaments

Get your controller in hand and remember your dominating combos as you prepare to face off with the best gamers around. Take on all challengers in these casual video game tournaments throughout the weekend. This year, we will be hosting the following video game tournaments:

- Super Smash Bros. Ultimate Doubles
- Super Smash Bros. Melee
- Soul Calibur 6
- Guilty Gear Xrd Rev 2
- Mario Kart 8
- Pokemon Brilliant Diamond/Shining Pearl



## Charity Gaming Tournaments

Calling all competitive gamers! Take on the true challenge of the weekend, all for a good cause, in the Setsucon Charity Gaming Tournaments. This year, we feature Super Smash Bros. Ultimate and Guilty Gear Strive - with all proceeds going towards the National Alliance on Mental Illness (NAMI).

Entries for tournaments close at 9:00pm on Friday - with entry fees for each tournament set at \$15. Tournaments start at 11:00am each day.

Thanks to Penn State Altoona eSports, Penn State Smash, Penn State Fighting Games Club, and Penn State UPark eSports for partnering with us to run these tournaments.



## Charity Gaming Tournaments Presented By



Penn State UPark eSports



Penn State Smash



Penn State Altoona eSports

# Anime Music Videos

*Are you a fan of AMVs? if you like great music combined with your favorite anime, come check out the AMV Contest! Sit back, watch amazing visual creations, and enjoy this awesome art!*

## AMV Contest Showing

Join us as we showcase the many AMVs from around the world that were entered into our contest this year! From laugh out loud comedies to tearjerking videos, our AMV entries cover the full spectrum of emotions sliced together for a major joyride. You won't want to miss the talent on display here. And even better - you have a vote in giving away our Best in Show and category awards! Also make sure to stop by our Feedback Session on Sunday to see who came away with awards!

## AMVs of the Past

Check out some of the previous AMVs submitted to our past contests the last few years in a showcase of some of our favorite submissions. From championship winners to creative designs, this showcase of past AMVs captures the art and talent necessary to create an AMV. A perfect and casual way to kick off your Setsucon Weekend!

## 2020 Award Winners

|                 |  |
|-----------------|--|
| Best In Show:   | Flyers<br>by Zeeruy                      |
| Judges' Choice: | Dragon Dreamer<br>by Silent Hero Studios |
| Action/Drama:   | This Is How We Burn<br>by Opner          |
| Romantic/Sent.: | Breakdown<br>by TwigglyFiggly            |
| Comedy/Upbeat:  | Ghostbusters<br>by Nuke                  |

## 2019 Award Winners

|                 |   |
|-----------------|---|
| Best In Show:   | Happy Little Clouds<br>by Glitzer       |
| Judges' Choice: | S is for Sadistic<br>by Kyci            |
| Action/Drama:   | Tokyo Ghou! Survivor<br>by Erik Heckert |
| Romantic/Sent.: | Never Enough<br>by Anime Twins          |
| Comedy/Upbeat:  | Hero Creation<br>by PaNTSU oF d00m      |

# Itasha Car Show

*Check out a showcase of Itasha and anime-inspired cars in the Itasha Car Show presented by Livery By Design. See cars decked out from front to rear in anime gear, or even replicas of famous anime vehicles. Rev up your engines and jump into one of the most high speed events of the con!*

## Hours (in Exhibitors Hall)

Saturday: 10:00am - 6:00pm  
Sunday: 10:00am - 3:00pm

## About Livery by Design

Dream: a cherished aspiration, ambition, or ideal. The dream began between two friends who wanted nothing more but to do what they loved and believed in. What started as professionally showcasing Itasha & Anime Inspired Cars turned into creating a brand that would soon represent them. In 2019, Livery By Design went from Dream into Reality with a focus not only on Itasha & Car culture but a brand that their team and fans could stand behind. They believe in Living By Their Design, representing life's everyday experiences and put a touch of anime inspiration along with it.



# Maid Cafe

*With a blend of cosplay, games, music, performances, and hospitality, the Setsucon Maid Cafe presented by Pixel Pop - join these maids for an event that is sure to be special!*

## Cafe Seating Times

Sign-up in advance at the Maid Cafe Room for the following seating times. There is a \$5 fee per person to sign-up.

Saturday: 12:00pm - 1:00pm  
1:30pm - 2:30pm  
3:00pm - 4:00pm  
4:30pm - 5:30pm  
Sunday: 12:00pm - 1:00pm  
1:30pm - 2:30pm

## About Pixel Pop

Established in 2019 in the DC Metro Area, Pixel Pop is a gaming-themed maid cafe where YOU are the hero! They host pop up events throughout the east-coast catering towards the "nerd culture" scenes. You can find them on Facebook, Instagram, and Twitch @pixelpopmaidcafe.



## Rules

During your time at the Maid Cafe, please make sure to abide by the following rules. Any rule infractions may result in removal from the Maid Cafe without refund, or escalation to Convention Operations department.

- Do not touch the maids.
- Do not ask for the maids' personal information.
- Do not change seats.
- Do not linger when your time is up.
- Do have fun & play lots of games.



# Silent Auction

*Returning for its fourth year, the Setsucon Silent Auction supports Extra Life. Visit the Silent Auction Booth in the Exhibitors Hall before 1pm Sunday to place your bid on great prizes.*

## Silent Auction Rules

- Bidding Opens at 10:00am Saturday.
- Bidding Closes at 1:00pm Sunday.
- All new bids must increase by a minimum of \$5.
- All winners must be able to pick up prizes on Sunday between 1:00pm and 4:00pm; winners will be contacted via phone call/text - after three missed attempts at contact, the next highest bidder will be selected.
- Payments can be made in person via cash donation or credit card donation via the Anime For Humanity page.
- Bidding can be halted or extended at any time at the discretion of the Setsucon Staff.
- Purchasing of items outright is not allowed; all items must be won via bidding.

## About Extra Life

Extra Life unites thousands of gamers around the world to play games in support of their local Children's Miracle Network Hospital. Through working with gaming streams, clubs, conventions, and more, Extra Life is able to raise funds and awareness for more than 170 member hospitals and provide 32 million treatments each year to kids across the US and Canada. Donations stay local to fund critical treatments and healthcare services, pediatric medical equipment, and charitable care.

## Donate Today

Want to support Extra Life? Donate today directly to Extra Life via our Official Setsucon Extra Life Page:

[www.extra-life.org/participant/setsucon](http://www.extra-life.org/participant/setsucon)

# Manga Library

Do you love reading manga? Take a break and enjoy our extensive manga library! We have over 800 volumes to choose from - with both popular titles and new ones to explore! Unleash your inner bookworm, sit down, and enjoy. You are sure to find something that you'll love.

## Hours of Operation

Saturday: 9:00am - 11:00pm

Sunday: 9:00am - 5:30pm

## PSAO Manga Library

We give thanks to the Penn State Anime Organization, known simply as PSAO, for providing part of their extensive library for us to use. With more than 600 titles and over 2,500 volumes of manga, the PSAO Manga Library provides members of the organization, Penn State students, and the local community a place to relax and enjoy the medium that they love.

The PSAO Manga Library is a fast growing collection of titles both new and old. Their collection is mostly donation based, having grown over the years as members help stock the shelves. A true symbol of the club, the manga library is one of the first sights a new member sees as they walk into the organization's office.

## Recommended Titles

Not sure what to read? Check out some of these recommendations:

### Fruits Basket

Watched the anime but never read the manga? Or maybe you're just looking for a nostalgic trip back to the 90s and early 2000s with this classic shoujo manga. Fruits Basket will not disappoint!

### Golden Kamuy

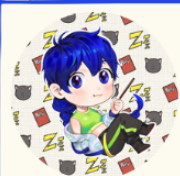
Interested in historical fiction or need something a bit more modern seinen? Golden Kamuy combines the best of both in this war meets adventure manga.

### Dr. Stone

Calling all science enthusiasts! Grow your knowledge of the stone age with this all out action-adventure.

### Skip Beat

You are at Setsucon after all... the con where the Skip Beat dub first debuted in front of some of the voice cast back in 2017.



# PSAO!

PENN STATE ANIME ORGANIZATION



PSAO LinkTtree  
QR Code

Since September 2001, PSAO has been bringing anime, manga and Japanese pop culture to the Penn State University Park campus. Working to provide both weekly screenings and a social environment for Penn State's anime/manga fan base, PSAO is continually broadening its horizons!

**EVERY  
TUESDAY**

Viewing Night  
7:30pm

**EVERY  
WEDNESDAY**

Gaming Night  
8pm

**EVERY  
FRIDAY**

Manga Night  
8pm

Learn more about PSAO: Penn State Anime Organization  
using the QR Code or the links below



[sites.psu.edu/pennstateanime](https://sites.psu.edu/pennstateanime)



<https://discord.gg/aq3Y9SV>



[@pennstateanime](https://www.instagram.com/pennstateanime)



2022

---

**SETSUCON**  
**ANIME AWARDS**

---

**Tune In**  
**Saturday, January 23rd, 2022**  
**At 7pm ET**  
**To See The Winners**  
**of the**  
**2022 Setsucon Anime Awards**

**[twitch.tv/setsucon](https://twitch.tv/setsucon)**

# Guest Panels

## **Antipode** **A Demon Slayer Meet & Greet**

CAW! Do you love the charm of Nezuko? The grace of Shinobu? Or the virtue of Tanjiro? Bring your Nichirin Blads, or just yourselves, and come hang out with Antipode! There will be dancing, games, and many laughs. Bring your friends, as everyone is welcome to this all ages gathering! You'll scream like Zenitsu and be grumpy like Inosuke if you miss it!

## **Setsucon SMASH**

SETSUCON SMASH! Class 1-A is struggling to come up with an idea for their school's next festival. Will they fail or go PLUS ULTRA!? Feel free to laugh and cheer during this comedic dance show as Class 1-A tries to be the number one hero class! All Heroes and Villains are welcome to this all ages show! You will really want to baku-GO to this performance!

## **Learn to Demon Slayer Bellydance!**

CAW! Do you want to flow like Tanjiro, shimmy like Zenitsu, pose like Inosuke, or charm like Nezuko? Do you want to learn how to bellydance? Bring your Nichirin Blades, or just yourself, and come dance with these Demon Slayers. Antipode will teach you a short choreography to LiSA's song Gurenge (*Demon Slayer: Kimetsu no Yaiba* Opening Theme)! Everyone is welcome in this judgement free class!

## **Brittany Lauda** **Get Excited For Stone**

Join Brittany (Yuzuriha) and Matt (Chrome) as they talk about the first two seasons the hit series that aired on Toonami, *Dr. Stone*, and make theories & predictions on what the third season could have in store. (May Contain Spoilers).

## **I Dub Anime & Went to Japan! Here's My Cool Finds!**

It's not a secret that voice actor Brittany Lauda loves what she does, and is a big fan of a bunch of the titles she works on. Come hear her talk about her favorite parts of their trip, and see some fun pictures of cool places she went and things she saw relating to the titles she works on!

## **Charles Dunbar** **The Fine Art of DMing**

It's harder than it looks. Creating a session, balancing encounters, choosing the right settings, and ultimately running the game requires a sense of finesse... and a lot of making square pegs fit in round holes. Part Q&A, part advice garnered from 25 (!) years of play and game mastering.

## **Kawaii Kunai** **The Anime That Influenced Our Music**

Meet the Winter Cospocalypse Tour artists for a chance to see inside the mind of a music creator. Anime is no stranger to great music and stories, so naturally we have drawn inspiration from many of our favorite shows. We want to tell you what anime have inspired our tracks, what characters we've channeled for lyrics, and so much more. Come ask us anything; what's our favorite anime, favorite Hashira, what magical girls do we want to cosplay? Let's Q&A this shiitake!

## **The Awesomus** **Showdown: Anime Edition**

Who would win in a fight between Goku wielding a keyblade vs Naruto leading an army of magical girls? Well you're about to decide right here and now! Join the fun in The Awesomus Showdown: Anime Edition, where you will take the stage and argue why your anime

Panels

fighter will claim victory! You will decide, as the chosen panel of experts, who will go home with the crown!

### **Name That ANIME!**

We all love anime but how awesome would it be to make your own? Well, let's do it! In this game show style panel, you'll receive the location, plot, trope, and maybe even your characters and you'll create what to call your anime or manga! Perhaps you're feeling a bit more creative.. well then, let us give you the title and your team gets to create what the next BIG anime is all about!

### **Otaku no Tataikai!**

Come see your favorite animes, anime characters, and general otaku topics battle it out... in the form of a freestyle rap-battle! Tray-Digga and Ray Riley of the Philly Nerdcore duo Heroes 4 Hire and Awesomus Prime bring you a rap battle of otaku proportions, where All Might can finally face off against Saitama! You will get to decide who will clash and who will rise victorious!

### **Matt Shipman**

#### **Get Excited For Stone**

Join Brittany (Yuzuriha) and Matt (Chrome) as they talk about the first two seasons of the hit series that aired on Toonami, *Dr. Stone*, and make theories & predictions on what the third season could have in store. (May Contain Spoilers).

#### **Writing Anime: It's More Complicated Than You Think!**

Do you ever sit at home and think "gee whiz I betcha I could write me some good old fashioned animez"? Well sorry to tell you kid, but writing anime is a lot harder than you think! Join Matt Shipman as he details his adventures in adaptive scripting to avoid awkward interactions in anime!



**warda wigs**  
*Make a little magic*



# Fan Panels

## Anime & Manga

### 1990's Anime: The Best of the Rest

*w/ Children Driving Robots*

The 1990's had a tremendous amount of good anime... but not every series can be considered the best. Come join Children Driving Robots as we discuss various 1990's anime that fall into the category of the best of the rest.

### Americanized Anime

*w/ Children Driving Robots*

Before anyone knew what "anime" was, they were just cartoons that weren't American enough. Join Children Driving Robots as we take a look at the different ways that anime was adapted over the years to Americanize them and why. 'murica!

### Cyberpunk in Anime

*w/ Consider the Nonsense*

Join us for a look at the cyberpunk genre, as we break down what the term really means, and provide an overview of its history in anime and manga.

### Lost Media: What's In YOUR Attic?

*w/ Children Driving Robots*

Why is this anime not available? What happened to all those movies that were made in the early days of film? Why do video games not get released? Come join Children Driving Robots and discuss various lost media from anime, movies, television, and video games.

### Lovecraftian Horror in Anime and Manga

*w/ Consider the Nonsense*

HP Lovecraft may have been an American, but that doesn't mean America has a monopoly on Cosmic Horror. In this panel, we're going to talk about a few anime and manga that are Lovecraftian in style and tone, and talk about the themes that make something Lovecraftian, even when the author has never read Call of Cthulhu.

### Math in Anime

*w/ Luhar The Great*

If you ever thought that calculus could never be useful outside of the blackboard... you would be wrong - it does have one use: in anime! Take a geometric dive into

the mathematical world of anime, where addition, subtraction, and integration are so much more important than tsunderes and yanderes.

### Unlicensed Anime: We're Waiting...

*w/ Children Driving Robots*

Many anime get licensed and relicensed every year. What about those that don't or return to the unlicensed void? Come join Children Driving Robots to discover and/or rediscover these anime just waiting for their opportunity.

### Where Do I Start?!

*w/ A Nerdy Couple*

Between reboots, remakes, recuts, sequels, compilation movies, spin-offs, and more, it's becoming more and more complicated to be an Otaku on top of your favorite franchises these days. Well, worry no more! We aim to not only sort out the tangled knots of some of our favorite franchises and series, but also look at the shift in anime culture that led to series getting remade even years after their original series have finished. Even if not every series is as simple as starting at Episode 1, there's still a great time to be had exploring these deeply rich and developed franchises as a new fan or a veteran looking to expand their library!

## Cosplay

### Cosplay TED Talk:

#### We Walked So You Could Run!

New, improved, and back again! An educational and informational panel discussing all things cosplay and cosplay culture, by the people who have been at this crazy game since before some of you young folk even knew who Naruto was! Discussing topics from cosplay construction methods both old and new, to the highs and lows and horror stories of social media and cosplay history. All ages welcome!

### Do's and Don'ts of Cosplay

*w/ Lucky 13 Cosplay Studios*

When cosplaying characters at conventions, it's very easy to make mistakes that could cost you your costumes, your wigs, and get yourself hurt. Come listen to a bit of advice on some things that you should and should not do when cosplaying.

## Crafting & Creating All About Gunpla

*w/ Consider the Nonsense*

You've heard the word "Gunpla," but you don't know what it is? Stop on by and get a crash course in the world of Gundam models and how you can join a community that spans decades.

## Dragons, Cryptids, and Dinos, OH MY!

*w/ Painting Dragon Feathers*

Learn how to craft vibrant, exotic creature characters for your stories and illustrations by studying zoology, paleontology, folklore, history, and a menagerie of other authors' work. We will also dissect a dragon - from inspiration, to designing and maquetteing, to writing his story.

## From Zero to Animation Hero

This panel is for creatives who are either looking to start their creative journeys or need help staying on the creative pathway. Here, I'll tell my story about my transformation - how I transformed from a designer with minimal art skills into a creator of pixel art animations that have garnered tens of thousands of likes and led to awesome freelance work. To help me tell my story, I've brought a colorful and cutely animated slide deck, which contains a showcase for my work, how I created it, and how I stayed motivated to work on it even when I didn't feel like it.

## Making a Monster

*w/ EllieMetrics*

Have you single-handedly fought all of the monsters in the manual and are now looking for a new challenge? Make your combat encounters more engaging and memorable in your TTRPG of choice with this monster-making workshop. We'll go over the basics of creature creation, how to balance an encounter, and how to make your battle the stuff of legends.

## Japanese Culture & Pop Culture Girls x Heroine -

### Not Your Sister's Magical Girls

Did you know that there's a live action version of *Sailor Moon*? That's not what this panel is about, but it sure is a good segue! Come by for a discussion on the relatively new tokusatsu franchise, *Girls x Heroine*,

a Japanese TV series helmed by the one and only Takashi Miike... and the musical groups they spawned.

## Japan's Convenience Culture

*w/ A Nerdy Couple*

Imagine stopping at the vending machine at the corner and having the choice not just of different kinds of soda, but everything from hot ramen to cold coffee, fresh fruit, or an umbrella! When you're done, you stop at the convenience store to pick up your groceries, pay your bills, & even get a new exclusive anime figure! Join us as we explore the crazy convenience culture of Japan, where you can get everything from groceries, home improvement tools, and exclusive anime merch at a convenience store, and nearly anything you could ever want can be found in a vending machine on the corner!

## Maid Cafes 101

*w/ Pixel Pop Maid Cafe*

Ever wondered what a maid cafe is? Join the maids of Pixel Pop for a crash course in all things moe! This is a great opportunity to learn about maid cafes before diving into them on Saturday & Sunday.

## Win, Place... Waifu? Japanese Horse Racing

*w/ A Nerdy Couple*

The thundering of hooves, wind in your face, thrill of victory... and an idol concert? Horse racing in Japan has a rich and deep history that many in the west didn't know existed. We'll be taking a look at the many horses, races, and media surrounding this beloved sport that has sparked many video games, mobile games, and even an idol anime. Saddle up!

## Demonstrations

### Intro to Airbending (aka Baguazhang)

*w/ YenLiang "Li" Chen*

Did you know that airbending in *Avatar: The Last Airbender* is based on the real Chinese internal martial arts style of baguazhang? You may have seen a fictional version of baguazhang (hakkeshou) in *Naruto*. Join the workshop to learn the real version of baguazhang with single palm changes, circle walking, and mud walking.

# Fan Panels

## Intro to Swordplay

w/ YenLiang "Li" Chen

The sword is a weapon that is depicted in all sorts of media, including anime, manga, and martial arts movies. You may have seen swordplay in *Star Wars*, *The Lord of the Rings*, *Highlander*, *Crouching Tiger Hidden Dragon*, and *Rurouni Kenshin*. Join the workshop to learn some basics of sword use, including transitioning between guards to cut and thrust. Pool noodles will be lent for use in this event.

## Intro to Waterbending (aka Taijiquan)

w/ YenLiang "Li" Chen

Did you know that waterbending in *Avatar: The Last Airbender* is based on the real Chinese internal martial arts style of taijiquan? You may have seen some in the recent Marvel movie *Shang-Chi* as well. Join the workshop to learn the fluid movements of the first four energies of taijiquan.

## Ohayo, Setsucon!

w/ ElliMetrics

Ohayo, Setsucon Attendees! Let's start our con morning off right with some beginner-friendly stretches. Feeling stiff from sitting in on panels? Legs aching from waiting in lines? We'll go over some poses and stretches to help keep you feeling your best at this convention.

## Game Shows

### Name That Tune

w/ MelloPanther Productions

After a year off out of fear of Twitch copyright hell, Name That Tune is back! It's a new look, but same great game, same banger tunes, and same great prizes!

### Quiz Hunter

w/ MelloPanther Productions

Ever wanted to be on a Japanese quiz show? Well now you can! Sort of! Join the hunt for fantastic prizes, all you have to do is get the question right! Also there's a doggo!

## Tokyo Tunes: Test Your Anime Music Knowledge!

Think you know your anime music? Prove it! Come show off your skills in this exciting anime music tournament! OG fan or newbie, all are welcome to try their luck.

Things will get heated as the difficulty ramps up. You will need knowledge and teamwork to make it through! I hope to see you soon.

## Wheel Of Fortune

w/ MelloPanther Productions

For a 6th Year in a Row, America's Game comes to Setsucon. Spin, buy, and solve your way to fabulous prizes!

## Gaming

### Doki Doki Dungeon Club

w/ ElliMetrics

Doki Doki Dungeon Club is back for its third year, seeking adventurers for an ad-lib, fantasy comedy show set in the mythical world of Setsucon. Four lucky audience members will be invited to take to the stage in a rules-light RPG-themed adventure as they solve riddles, fight foes, and act their hearts out.

## Cozy Gaming

w/ ElliMetrics

Join us for a brief history of the cozy gaming genre, as we take a look at what makes a game "cozy." We'll discuss some of the games that kept us comfortable and engaged throughout quarantine as we give summaries and recommendations on some of our favorite cozy games. Stop by to find your next game to warm up with.

## Industry

### Fan Events Overcoming Covid and the IOEA

w/ International Otaku Expo Association

The International Otaku Expo Association (IOEA) is a global network of fan events and recently hosted Otaku Summit 2020 as part of the official cultural programme of the Tokyo 2020 Olympics and participated in Comiket 99. While the Covid-19 Pandemic is still creating major obstacles over the operation of fan events, events around the world are recovering step by step. This panel will examine the current state of international fan events with examples from Japan, China, and Europe.

## Music

### Anime Music and Piano Tutorials

Learn how to play some of your favorite songs on piano. You do not need prior



experience to completely enjoy it. And maybe you could make some requests to learn.

### **Variety** **Rahul Power Hour**

*w/ Luhar The Great*

404 Description Not Found - 01010011  
01100101 01101110 01100100 00100000  
01001000 01100101 01101100 01110000

### **18+** **Anime Trivia [18+]**

*w/ Setsucon Con Chair & Secretary*

Join the Setsucon Con Chair and the Secretary as they play some anime trivia! Test your anime knowledge as there will be questions about openings, manga artists, voice actors, & general anime trivia.

### **AnimExperts Live [18+]**

*w/ Children Driving Robots*

Are you an Animexpert? Could you describe an anime series with just one image and an anime opening? Or would

you describe it as the coolest and craziest series never made? Then come join Children Driving Robots and prove yourself to be an Animexpert!

### **YIKES! Anime & Con Stories To Tell After Dark! [18+]**

No one escapes watching anime without a few horror stories. Step into an hour filled with the most cursed, raunchiest, and weird stories one could tell... and leave with even more stories for next time.

# DERPYCON 2022

New Jersey's Anime, Gaming,  
Sci-Fi, & Comic Convention

PANELS | ARTISTS | COSPLAY | GAMES  
VENDORS | MEMES | KARAOKE | VIEWINGS  
**COME HOME TO THE CON BUILT FOR YOU**  
PRIZES | TOURNAMENTS | VIDEO GAMING  
AUTOGRAPHS | TABLETOP | MANGA | MUSIC

**October 28 - 30, 2022**  
New Brunswick, New Jersey  
[www.derpycon.com](http://www.derpycon.com)

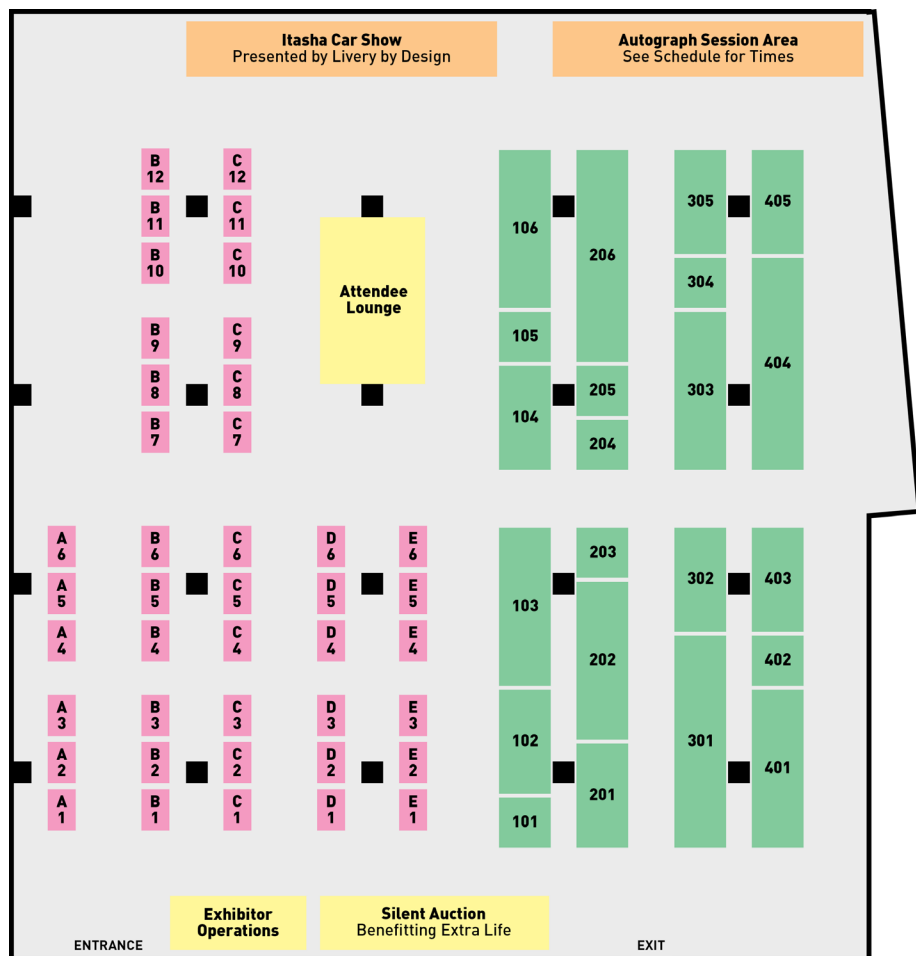


# Exhibitors Hall

## Hours of Operation

**Saturday**  
10:00am - 6:00pm

**Sunday**  
10:00am - 3:00pm



**GET YOUR SETSUCON 2022 OFFICIAL T-SHIRT**

*Purchase During the Convention at Booth 101 in the Exhibitors Hall*

*Featuring Artwork by Tony McKinney*

## List of Artists

|     |                                     |     |                          |
|-----|-------------------------------------|-----|--------------------------|
| A1  | Manifested Dreams                   | C4  | CHIOU!                   |
| A2  | Rikoohs                             | C5  | Awesomus Prime           |
| A3  | Nightengale Needles LLC             | C6  | Kawaii Kunai             |
| A4  | Squirrel & Grubb                    | C7  | A Punch in the Art       |
| A5  | National Alliance on Mental Illness | C8  | Painting Dragon Feathers |
| A6  | Ultimate Wireless LLC               | C9  | Wayward Cross Studios    |
| B1  | MintandApple                        | C10 | Pocket Toku              |
| B2  | Afterimages of Ghostfire            | C11 | Brittany Lauda           |
| B3  | Krazehcakes                         | C12 | Matt Shipman             |
| B4  | c-dra                               | D1  | Moon Rose Cafe           |
| B5  | Freeze-Ex-ICECUTE Studio            | D2  | XXTRA PASTEL SHOP        |
| B6  | Jason Lenox                         | D3  | Samoht Lion Creations    |
| B7  | Purple Panda Productions            | D4  | Zensoko                  |
| B8  | Happime Sinome                      | D5  | SOULTOOTH                |
| B9  | KaitertotArt                        | D6  | On Dragon's Wing Studios |
| B10 | Mimosa Studio                       | E1  | PlanetPlush              |
| B11 | LJAlley                             | E2  | Antipode Geek Bellydance |
| B12 | Tomatoda                            | E3  | PeachiEevee              |
| C1  | Onicake Co                          | E4  | SparklePunk              |
| C2  | Topaz Strange                       | E5  | Art-O-Torium             |
| C3  | KawaiiLolliePoP                     | E6  | Charles Dunbar           |

## List of Vendors

|     |                      |     |                               |
|-----|----------------------|-----|-------------------------------|
| 101 | Setsucon Merch Booth | 206 | Otaku Joe's LLC               |
| 102 | Cartridges Galore    | 301 | Trilogy Shop                  |
| 103 | HKT/mugentoy.com     | 302 | Urban Sheek                   |
| 104 | Tasty Peach Studios  | 303 | Phase ID                      |
| 105 | Dia Splits LTD       | 304 | Cutie Pie Kawaii              |
| 106 | IT Cosplay           | 305 | Home Circle Media             |
| 201 | Kyoto Anime          | 401 | Megaroad Toys & Entertainment |
| 202 | Otaku Underground    | 402 | Pluto Mas                     |
| 203 | Doctor Gus Designs   | 403 | Gold Star Anime & Games       |
| 204 | Jake's Cards & Games | 404 | Nerd Elysium                  |
| 205 | The Curious Wanderer | 405 | Alicia's Anime                |

## Special Events

|  |  |
|--|--|
| Itasha Car Show<br>Presented by Livery by Design                           | Autograph Sessions<br>With Brittany Lauda & Matt Shipman                 |
| Features Itasha & Anime Inspired Cars,<br>Replicas, Car Wraps, & Much More | Get Autographs from Your Favorite VAs<br>See Schedule for Times Each Day |

## Amenities & Activities

|  |  |   |
|--|--|---|
| Exhibitors Operations<br>Stop By & Ask Questions | Silent Auction<br>Benefitting Extra Life | Attendee Lounge<br>Your Place to Take a Break |
|--|--|---|



# Food Guide

## Convention Center Cafe

### Hours of Operation

|          |                  |
|----------|------------------|
| Saturday | 11:00am - 6:00pm |
| Sunday   | 11:00am - 3:00pm |

### Entrees & Platters

|                                    |      |
|------------------------------------|------|
| Yuengling Meatloaf                 | 7.25 |
| w/ French Fries, Corn, & Roll      |      |
| Chicken Parmesan                   | 7.50 |
| w/ Penne Pasta & Garlic Breadstick |      |
| Penne Pasta with Chunk Marinara    | 6.00 |
| w/ Meatballs                       | 7.25 |
| w/ Grilled Chicken Breast          | 7.75 |
| Fritters & Fries                   | 7.50 |

### Sandwich Platters

|                                     |      |
|-------------------------------------|------|
| Mountain Top Burger                 | 6.50 |
| w/ Onions, Bacon, Lettuce, & Tomato |      |
| Charcoal Roasted BBQ Pork           | 6.25 |
| w/ Texas BBQ Sauce                  |      |
| Cheese Steak Platter                | 7.50 |
| w/ Peppers, Onions, & Cheese        |      |
| Meatball Grinder                    | 6.75 |
| w/ Shredded Mozzarella & Provolone  |      |
| Hot Sausage                         | 6.50 |
| w/ Peppers, Onions, & Garlic        |      |
| Grilled Chicken Sandwich            | 7.25 |
| w/ Lettuce, Tomato, & Onion         |      |

### Pizza, Fries, & Sides

|                            |      |
|----------------------------|------|
| Plain or Pepperoni Pizza   | 5.75 |
| Mac & Cheese               | 4.00 |
| Frankfurters               | 3.25 |
| Chili with Shredded Cheese | 4.50 |
| Nachos with Cheese         | 3.25 |
| w/ Chili & Extra Cheese    | 6.00 |
| French Fries               | 3.25 |
| w/ Cheese                  | 4.00 |
| Salad Du Jour              | 2.50 |
| Assorted Chips & Pretzels  | 0.75 |

### Beverages

|               |      |
|---------------|------|
| Assorted Soda | 3.00 |
| Spring Water  | 2.00 |

### Desserts

|                              |      |
|------------------------------|------|
| Assorted Ice Cream Novelties | 3.00 |
|------------------------------|------|

### Food Court is Located on Lower Level

Menu Items, Prices, & Hours are Subject to Change at the Discretion of the Blair County Convention Center

## Courtyard Altoona Food

The Connected Courtyard Altoona Hotel will have Onsite Breakfast & Starbucks Available Throughout the Weekend. Additional Food May Be Available During the Weekend at the Discretion of the Hotel.

## Local Discount Partner

### Show Your Badge for a Discount

|                    |               |
|--------------------|---------------|
| Little Tokyo       | 814-317-5635  |
| 10% Off Your Order | 2720 Plank Rd |

## Local Restaurants

### American/Bar

|                          |              |
|--------------------------|--------------|
| Applebee's Grill & Bar   | 814-941-7171 |
| Jethro's Altoona         | 814-942-2178 |
| Kings Family Restaurants | 814-949-2077 |
| Primanti Bros.           | 814-204-2949 |

### Breakfast

|                            |              |
|----------------------------|--------------|
| Allegheny Creamery/Crepes  | 814-696-5055 |
| Cracker Barrel Old Country | 814-944-0691 |
| Denny's                    | 814-942-4223 |

### Chinese

|               |              |
|---------------|--------------|
| China Buffet  | 814-695-9005 |
| No 1 Chinese  | 814-949-9583 |
| Panda Express | 814-940-7208 |

### Delis/Subs

|                   |              |
|-------------------|--------------|
| Front Street Subs | 814-695-2435 |
| Power House Subs  | 814-201-2771 |

### Italian

|                      |              |
|----------------------|--------------|
| Marzoni's Brick Oven | 814-695-2931 |
|----------------------|--------------|

### Japanese

|                    |              |
|--------------------|--------------|
| Aki Japanese Sushi | 814-942-2118 |
|--------------------|--------------|

### Mexican

|                          |              |
|--------------------------|--------------|
| Casa Valadez             | 814-944-2232 |
| Don Patron Mexican Grill | 814-949-1958 |

### Pizza

|                        |              |
|------------------------|--------------|
| Bella Italia Pizza     | 814-944-6015 |
| Original Italian Pizza | 814-695-8525 |

### Steak

|                          |              |
|--------------------------|--------------|
| Hoss's Steak & Sea House | 814-695-8543 |
| Outback Steakhouse       | 814-941-0555 |

Please DO NOT Bring Outside Food or Drinks Into the Blair County Convention Center



# BookFest PA



**N**ow with comics!

SAT. JULY, 16, 2022

Application details are coming soon.  
We are planning for an in-person event.  
Stay tuned.

[go.schlow.org/bookfestpa](https://go.schlow.org/bookfestpa)

# Staff Listing

## Executive Board

McKinley Morris  
*Convention Chair*

Shaunelle Rivers  
*Vice Chair*

Breanna Mullarkey  
*Secretary*

Emma Morris  
*Treasurer*

## Operations

|                      |                   |
|----------------------|-------------------|
| Operations Director  | Rahul Shah        |
| Operations Assistant | Sidney Cicchini   |
| AV Tech              | Stephen Ng        |
| Human Resources      | Stephen Helminiak |
| Logistics            | Leah Bilker       |

## General Volunteers

|                     |                      |
|---------------------|----------------------|
| Brooke Blocker      | Matthew Lin          |
| Joseph Brolin       | Drake Loose          |
| Shanelle Campbell   | Rex Lutz             |
| Rishi Chavan        | Wesley MacDougall    |
| Jeremy Curden       | Adam Moskal          |
| Desiree Davila      | Michele Mull         |
| Leah Davis          | Shawn Oputa          |
| Johanna Diehl       | Ellie Owens          |
| Melissa Eagen       | Alexa Pagan          |
| Nicol Farias Campos | Kelli Prizner        |
| Avery Fehl          | Frank Rimbeck        |
| Dan Feliciano       | Joel Rosado          |
| Kenneth Fite        | Skyler Sandner       |
| Kaitlin Hanahan     | Caleb Shen           |
| Jasmine Hart        | Aaion Smart          |
| Gawain Hart         | Thomas Stidman       |
| Elliot Hong         | Arianna Torres       |
| Renzo Huaman        | Daniel Weigle        |
| Christopher Jameson | Lyle Welch-Selfridge |
| Ibrahim Kamara      | Zach West            |
| Ramisha Karim       | Tyler Worthington    |
| Brett Landy         | Daniel Xu            |
| Ariana Krammes      | David Zlotnicki      |

## Programming

|                      |                   |
|----------------------|-------------------|
| Programming Director | Brandon Kong      |
| AMVs                 | Robert Tarlecki   |
| Cosplay              | Angel Wang        |
| Cosplay Assistant    | Rachel Anischenko |
| Dance                | Luke Tiffany      |
| Panels               | Humaid AlShehhi   |
| Tabletop             | Brian Naugle      |
| Video Gaming         | Patrick Adair     |
| Gaming Assistant     | Kevin Lin         |
| Gaming Assistant     | Nick Macelko      |
| Viewings             | A.J. Plotnik      |

## Public Relations

|                           |                   |
|---------------------------|-------------------|
| Public Relations Director | Michael Tartaglia |
| Advertising               | Paul Pietrinferni |
| Artists Alley             | Xiaoyang Luo      |
| Guest Relations           | Krista Dotterer   |
| Guest Services            | David Rubba       |
| Outreach                  | Melanie Geiger    |
| Press                     | Zach Foltz        |
| Publications              | Michael Tartaglia |
| Social Media              | Stephanie Howell  |
| Vendors                   | Jason Liu         |
| Video Production          | Ellie Seber       |

## Registration

|                        |            |
|------------------------|------------|
| Registration Director  | Lia Talmas |
| Registration Assistant | Jiwon Kang |

## Web

|               |             |
|---------------|-------------|
| Web Director  | Vivian Chen |
| Web Assistant | David Lin   |

## Con Feedback

Did You Like What You Saw This Weekend?  
Or Want to Let Us Know of Mistakes?  
Fill Out the Feedback Form Below,  
Or Attend the Feedback Session or Closing  
Ceremonies on Sunday to Let Us Know  
How We Did!

Feedback Form Link:  
<https://setsucon.com/setsu-feedback-survey/>

## Join Our Volunteer Team

Sign-Up At-Con to Be a Baby Penguin!  
Join our Volunteer Team at-con to help  
make this con as amazing as possible.  
If you work just 4-8 hours, you get:  
*A \$5 Off Coupon for the Merch Booth*  
*A Setsucon Branded Water Bottle*  
*A Small Setsucon Branded Gift*

Sign-Up at the Operations Room Today!



# Special Thanks

## Blair County Convention Center

|                 |                              |
|-----------------|------------------------------|
| Tom Schilling   | <i>Director &amp; Chef</i>   |
| Tara Saltzberg  | <i>Sales &amp; Marketing</i> |
| Antoinette Marx | <i>Sales Manager</i>         |
| Stephen Despot  | <i>Facilities Director</i>   |
| Barbara Wise    | <i>Business Manager</i>      |
| Elizabeth Mills | <i>Banquet Manager</i>       |

## Penn State Anime Organization

|                   |                         |
|-------------------|-------------------------|
| McKinley Morris   | <i>President</i>        |
| Breanna Mullarkey | <i>Vice President</i>   |
| Emma Morris       | <i>Treasurer</i>        |
| Shaunelle Rivers  | <i>Public Relations</i> |
| Erin Baskin       | <i>Advisor</i>          |
| Michael Tartaglia | <i>Co-Advisor</i>       |

|            |                         |
|------------|-------------------------|
| Sarah Gori | <i>Setsucon Founder</i> |
|------------|-------------------------|

## Art Credits

|  |                           |
|--|---------------------------|
| Xinsheng Wei                                     | <i>Booklet Cover Art</i>  |
|  | <i>Badge Artwork</i>      |
| Tony McKinney                                    | <i>Attendee Shirt Art</i> |
| Michael Tartaglia                                | <i>Staff Shirt Art</i>    |
| K-B Offset Printing Inc.<br>of State College, PA | <i>Booklet Printer</i>    |
| Admit One Products<br>of Irvine, CA              | <i>Badge Printer</i>      |
| National Sportswear<br>of Belleville, NJ         | <i>T-Shirt Printer</i>    |

## Partner Hotels

Courtyard by Marriott Altoona  
Holiday Inn Express & Suites Altoona  
Hampton Inn Altoona  
Fairfield Inn & Suites Altoona  
Altoona Grand Hotel

## Additional Thanks

|                       |                         |
|-----------------------|-------------------------|
| AnimEigo              | <i>Industry Partner</i> |
| Arda Wigs             | <i>Industry Partner</i> |
| I.O.E.A               | <i>Industry Partner</i> |
| Japan Candy Box       | <i>Industry Partner</i> |
| Kawaii Box            | <i>Industry Partner</i> |
| RightStuf Anime       | <i>Industry Partner</i> |
| Sentai Filmworks      | <i>Industry Partner</i> |
| Funimation            | <i>Prize Support</i>    |
| Ultimate Wireless LLC | <i>Prize Support</i>    |
| Livery by Design      | <i>Car Show Partner</i> |
| Extra Life            | <i>Charity Partner</i>  |
| NAMI                  | <i>Charity Partner</i>  |
| Explore Altoona       | <i>Local Partner</i>    |
| BookFest PA           | <i>Local Partner</i>    |
| Jake's Cards & Games  | <i>Tabletop Support</i> |
| SilverSheep           | <i>Emcee</i>            |
| Vern Horst            | <i>Con Photographer</i> |

## About Setsucon

Setsucon is a 3-day anime convention held annually at the Blair County Convention Center in Altoona, PA. Run under the Penn State Anime Organization since 2007, Setsucon has been bringing anime, manga, and Japanese culture to the winter months in Central Pennsylvania. After a year of planning, Setsucon debuted in 2007, as a one-day event with 288 people filling the halls of the Days Inn Penn State. Since then, we have expanded to more than 1,500 attendees (and moved 45 minutes away) to fill the halls once again, this time at the Blair County Convention Center. With a new space and a new city to call our home, we are continuing to grow and improve in ways we could have never dreamed of.

Since the beginning, the focus has been on three pillars: Anime, Cosplay, Gaming. We hold events, such as fan and voice actor panels, viewings, a Masquerade, an Iron Cosplay, a Gaming Gauntlet Tournament, various charitable programs, & much more to help make the weekend as exciting as possible for any type of fan. With both a family-friendly atmosphere and big con amenities, Setsucon has become the premier location to celebrate anime and Japanese culture during the chilly winter.

Setsucon is a proud member of the International Otaku Expo Association.

## Our Mission

Setsucon strives to bring a safe and inclusive social environment to anime and manga fans of all ages across Central Pennsylvania and beyond. We aim to bring the big con feel to a more intimate and affordable convention.

## About the Name

While planning our first Setsucon, we discussed several names. Our original name was to be "Daikon" like the radish and also "dai" for big. It was decided that this might be confusing as there was a "Daicon" held in Japan previously. Our next choice was "Setsucon." Setsu comes from the Chinese reading (on'yomi) of the Japanese word for "snow," yuki. Since the convention is held during the winter months, where snow is not uncommon, we felt the name was fitting.

# *Memories*

# Small Destination **Big** Adventures!

**For Lodging  
and other  
Things To Do**

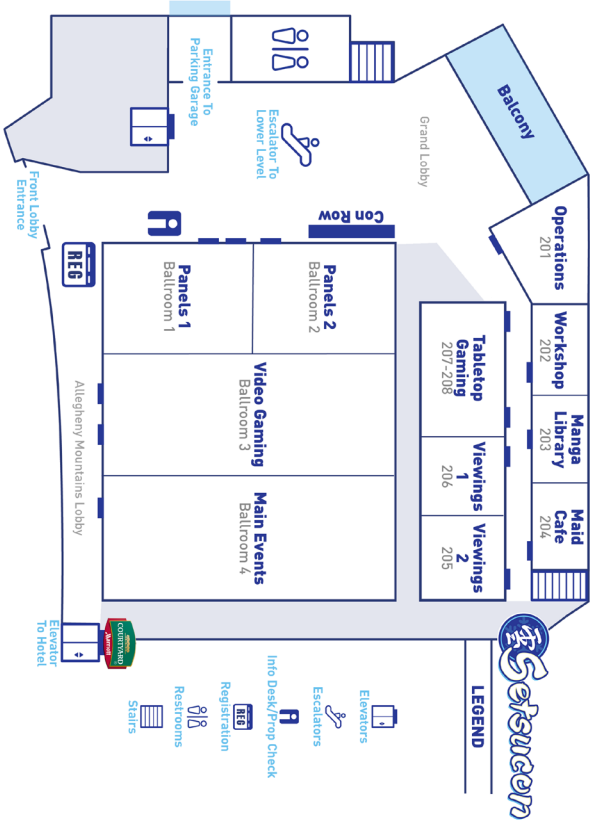
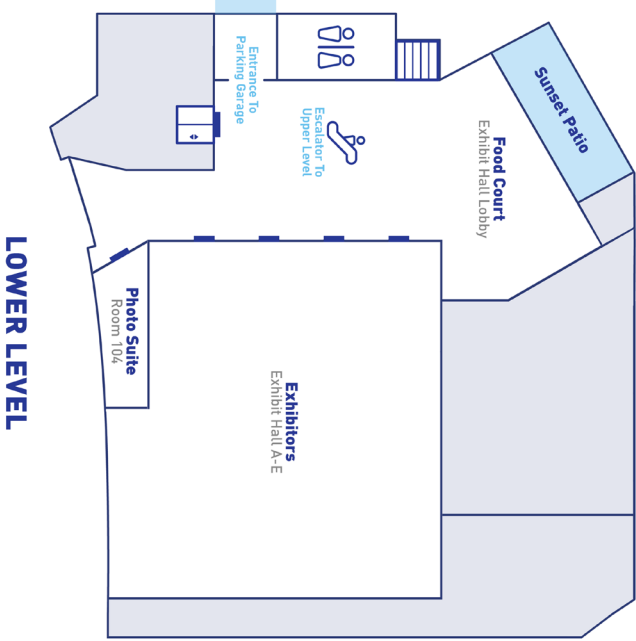
Visit

explore  
**Altoona**  
Blair County, Pennsylvania

**explorealtoona.com**



# CONVENTION MAP



*See You in 2023!*